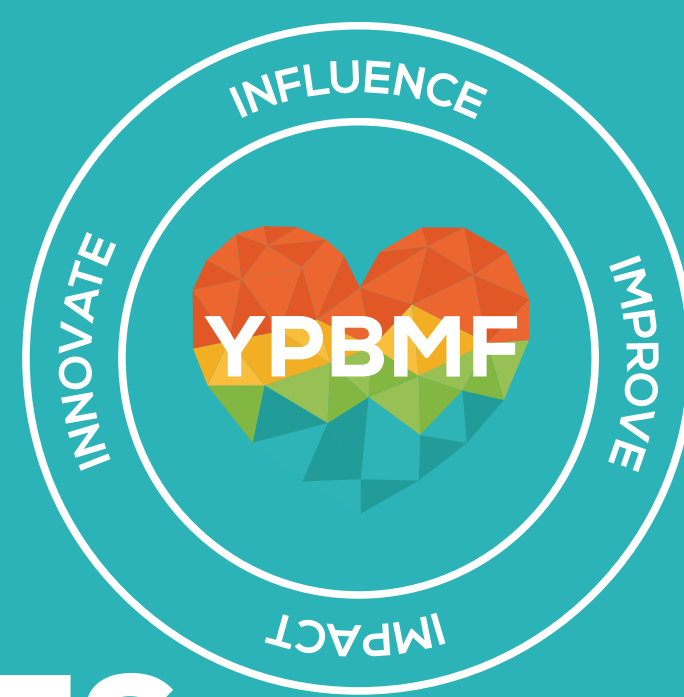


NATIONAL LEAVING CARE BENCHMARKING FORUM:



MEMBERSHIP BENEFITS

Events

9 Hybrid Events for leaving care professionals & care experienced young people. Member Local authorities have access to in person & online places at:

- 3 x two-day Leaving Care Managers events including DfE & Ofsted Updates, Policy Updates, hearing from care experienced young people & LAs sharing good practice.
- 3 x themed Practitioner Events aimed at PAs, Social Workers & Participation Workers
- 3 x Young People's Benchmarking Forum Events for care experienced young people (& supporting staff) which focus on networking, consulting around key topics & celebrating care experienced young people.

All sessions are recorded & available on the NLCBF Members website to watch/listen back.

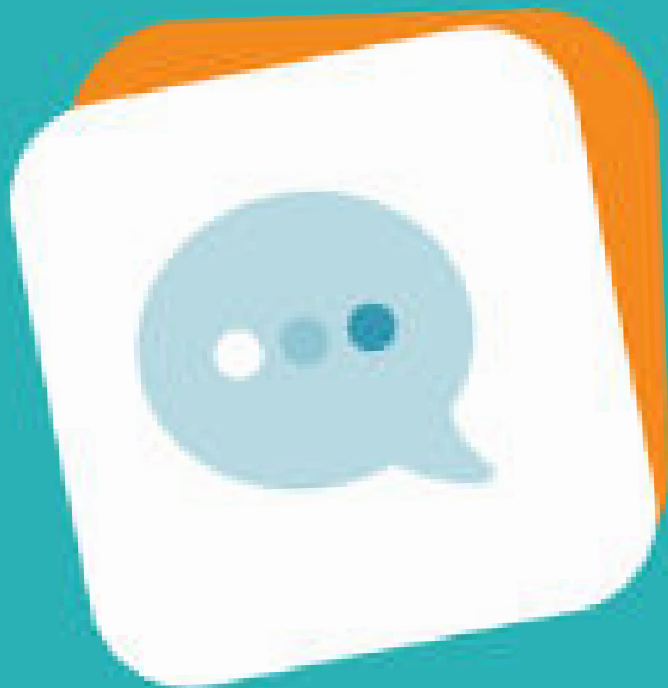
Regional Work

The NLCBF team work closely with Regional Leaving Care Managers groups (including chairing the pan-London group) & those developing regional offers for care leavers.

Networks/Community of Practice

NLCBF run 4 regular online networks for leaving care professionals with specialist roles or interest. They focus on sharing good practice & updates & offering a safe place for peer problem solving:

- Education, Training & Employment Network
- Participation Network, for Participation leads
- Mental Health & Care Leavers Community of Practice (Launching Feb 2024)
- Care Experienced Apprentice Network – For apprentices & those supporting them



Workshops

Each year NLCBF offers:

- A Local Offer Development Workshop
- 2x Pathway Planning workshops
- Annual online Student finance workshops
- Additional online workshops
Eg. Impact of Illegal Immigration Bill,
Transitional Safeguarding,

Leaving Care Resources: Members Only

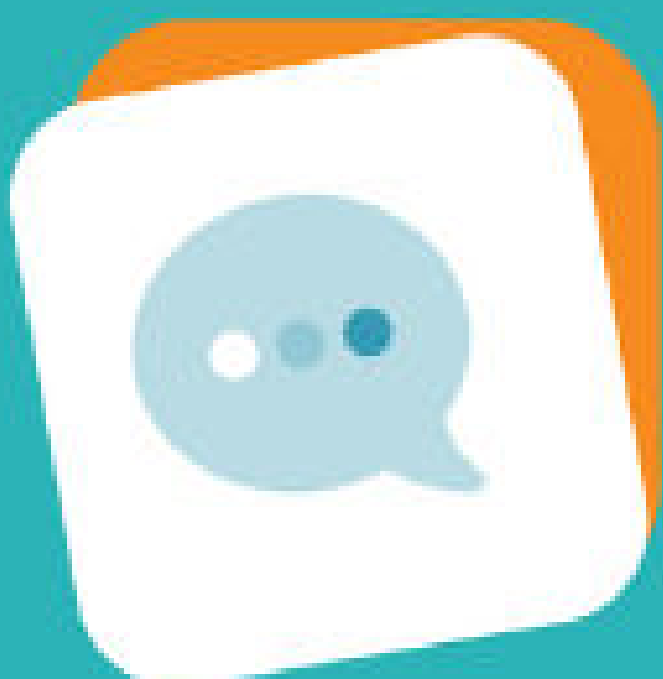
- Local Offer Toolkit
- **NEW FOR 2024** – Supporting Qualifying Young People Guide
- **Developing in 24-25** – Online PA Induction Materials

**87% of English LAs are
members of NLCBF**

Young People's Benchmarking Forum (YPBMF)

YPBMF is at the heart of NLCBF & ensures that the voices & priorities of care experienced young people shape our work. There are opportunities for Care experienced young people to:

- Attend 3 x YPBMF events each year (see Events above)
- Become 'Champions' & get involved with events, workshops, consultations & influence work.
- Keep in touch via our bi-monthly YPBMF newsletter
- Be part of the 'Care Experienced Apprentice Network.



94% of LAs say that NLCBF membership has impacted their leaving care practice in a positive way in the last year.

(NLCBF Membership Survey, 2023)

Members website – Updates, Networking & Resources

Each Local Authority can register up to 40 staff members on the website. Everyone registered:

- Will receive all NLCBF events & opportunities by email
- Will receive regular leaving care policy and research updates by email
- Can access contact information for other member leaving care teams
- Can use the 'Enquiries' page to find out how other LAs are addressing particular issues
- Can access 100s of leaving care resources on a wide range of topics.

Specialist Leaving Care Support

The NLCBF team offer specialist support including:

- 1-1 discussions with the NLCBF Practice Lead - previously a leaving care manager
- Coproduction advice & Support from the NLCBF Coproduction & Engagement Lead & care experienced sessional workers
- Support around funding bids & development with the NLCBF Manager.

Ofsted, DfE & National Influence

NLCBF are seen as a 'go-to' organisation in the leaving care sector. NLCBF work closely with:

- Ofsted – Sharing key messages with Local authorities and back to Ofsted. NLCBF are members of Ofsted's Leaving Care Consultative Forum & National Forum.
- DfE's Leaving Care Policy Team & Mark Riddell, National Implementation Adviser for Care Leavers – meeting them regularly & with a DfE session at each Managers' event
- Department of Levelling up, Communities & Housing around work to reduce homelessness
- Local Government Association – raising key issues around supporting care leavers
- HMPPS – NLCBF advise on the development of their support for people with care experience
- Children in Care and Care Leaver's Alliance, a group of 30+ charities active in this sector, with NLCBF Chairing the mental health & care leavers week subgroup.

“It was fantastic to hear young peoples' experiences, what has been helpful, what works & also what doesn't in terms of them having the best support.”

Personal Adviser, PA Event Nov 2023

“Being able to get together & talk about these issues has been great – I felt really comfortable & able to share my opinions & gained skills.”

Care experienced young person, YPBMF Event May 2023

“I have made friends who I will have for the rest of my life. I have been able to travel to different places around the UK & have been given experiences & opportunities which I wouldn't have if I wasn't with the forum. I finally feel like I have found the person I want to be, all thanks to the forum and being a champion.”

YPBMF Champion, 2023

“Information shared at the last Managers meeting really supported us with our Ofsted inspection to identify what areas we need to develop and what we are doing well”

Leaving Care Manager, 2023

100% of local authorities would recommend NLCBF membership
(NLCBF Membership Survey, 2023)

“Every Local Authority I visit, I’ll be saying to them – I think you should join - & I’m hoping that they’ll take my advice & they’ll see huge value in joining the forum.” Mark Riddell, National Implementation Adviser for Care Leavers, 2023.